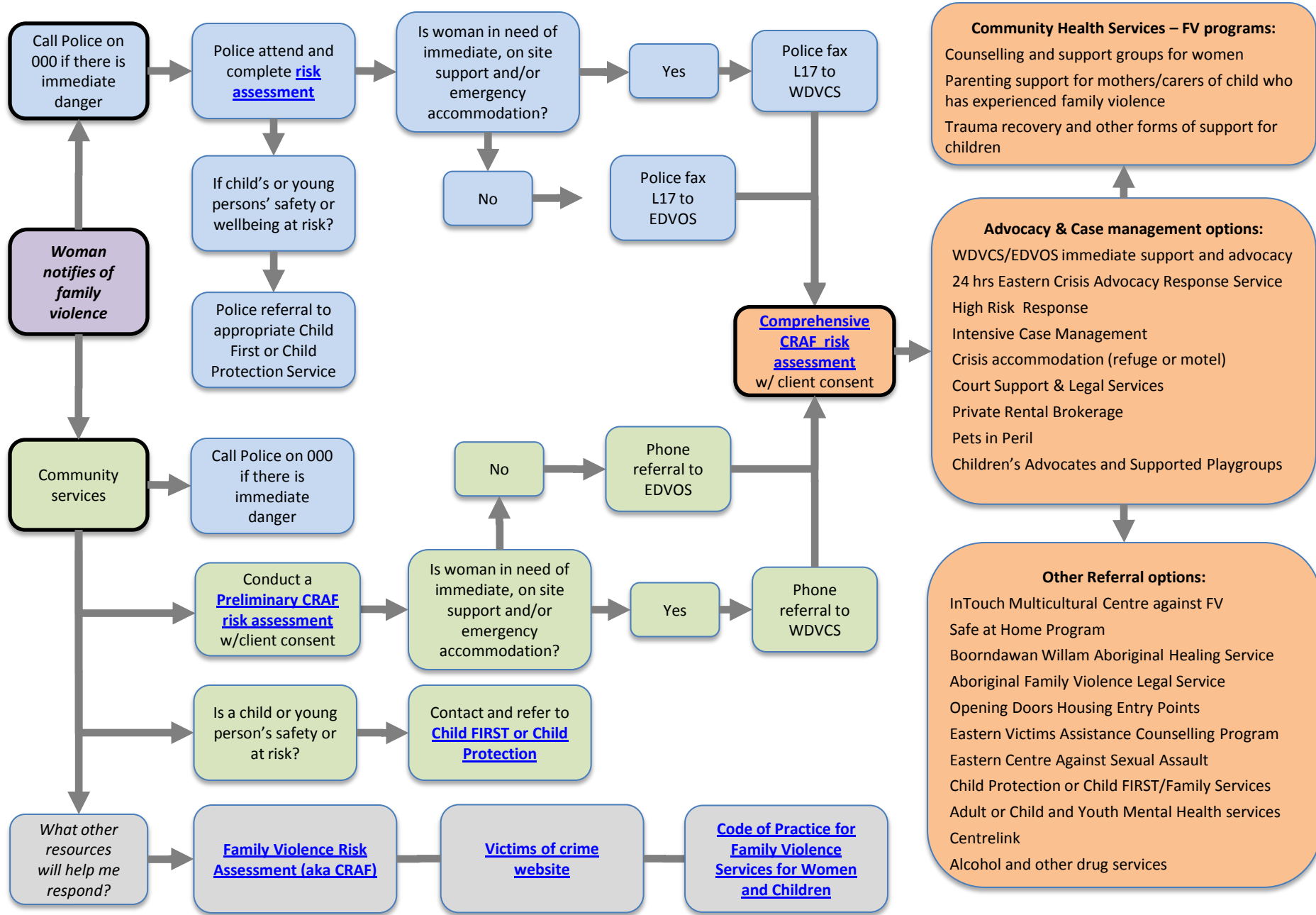


Family Violence system referral entry point for women & children in the Eastern Metropolitan Region



Guide to the flowchart

Important information:

Call police on 000 if there is immediate danger to a victim of family violence.

Women's Domestic Violence Crisis Service (state wide) call 1 800 015 188, 24 hrs 7 days per week

Sexual Assault Crisis Line (state wide) call 1 800 806 292, 24 hrs 7 days per week

After Hours Child Protection Emergency Services (state wide) call 131 278

Eastern Domestic Violence Service (Eastern Metro Region) call (03) 9259 4200, 9am to 5pm, Monday to Friday

Eastern Centre Against Sexual Assault (Eastern Metro Region) call (03) 9870 7330, 9am to 5pm, Monday to Friday

Resources in the flowchart	Where to find more information:
Family Violence Common Risk Assessment Framework (aka CRAF)	Information and resources about the CRAF can be found on the Department of Human Services website. This includes information about the Preliminary and Comprehensive risk assessments. http://www.dhs.vic.gov.au/for-service-providers/workforce,-careers-and-training/workforce-training/child,-youth-and-family-services-workforce/family-violence-and-risk-assessment,-and-risk-management-training Please note: The <i>Preliminary risk assessment</i> is intended for use by service providers where family violence response is not their core business. The assessment assists with immediate safety planning and referrals for specialist family violence support. The <i>Comprehensive risk assessment</i> is intended for use by specialist family violence services for detailed safety planning and case management responses.
Victoria Police L17 Risk Assessment	Information about the L17 can be found in the Victoria Police Code of Practice for the Investigation of Family Violence (2 nd Edition). http://www.police.vic.gov.au/content.asp?Document_ID=288
Child FIRST or Child Protection Referrals	Information about when and how to make referrals to either Child FIRST or Child Protection Services can be found on the Department of Human Services website. http://www.dhs.vic.gov.au/_data/assets/pdf_file/0003/582591/flowchart-mandatory-reporting-27-5-10.pdf
Victims of Crime	Information for victims of crime, including civil and criminal justice responses to family violence can be found on the Department of Justice website. http://www.justice.vic.gov.au/wps/wcm/connect/vsa/voc/
Code of Practice for Specialist Family Violence Services for Women & Children	Domestic Violence Victoria is the peak body for specialist family violence services in the state. This code of practice guides best practice service provision for these services and can be found on the DV Vic website. http://www.dvvic.org.au/attachments/C O P FINAL.pdf